

AVID EAZICAL ELECTRO-PNEUMATIC POSITIONER GENERAL PURPOSE

The EaziCal is an electro-pneumatic positioner providing fast, automatic calibration via a simple push button procedure.



FEATURES

- Advanced auto-calibration takes care of positioner gain settings, zero, span and internal adjustments.
- Strong, durable HiVue Beacon offers 360° display clearly visible from up to 50 m.
- Optional end-of-travel limit switches or 4-20 mA feedback transmitter available.
- Negligible-bleed lapped spool and matched sleeve design delivers significant energy savings.
- Corrosion resistant engineered resin IP66 rated enclosure for general purpose applications.
- Optional high flow transducer.

TECHNICAL DATA

Agency approvals

Enclosure standards (IEC)	IP66
(ANSI/NEMA 250)	Type 4.4X

Enclosure

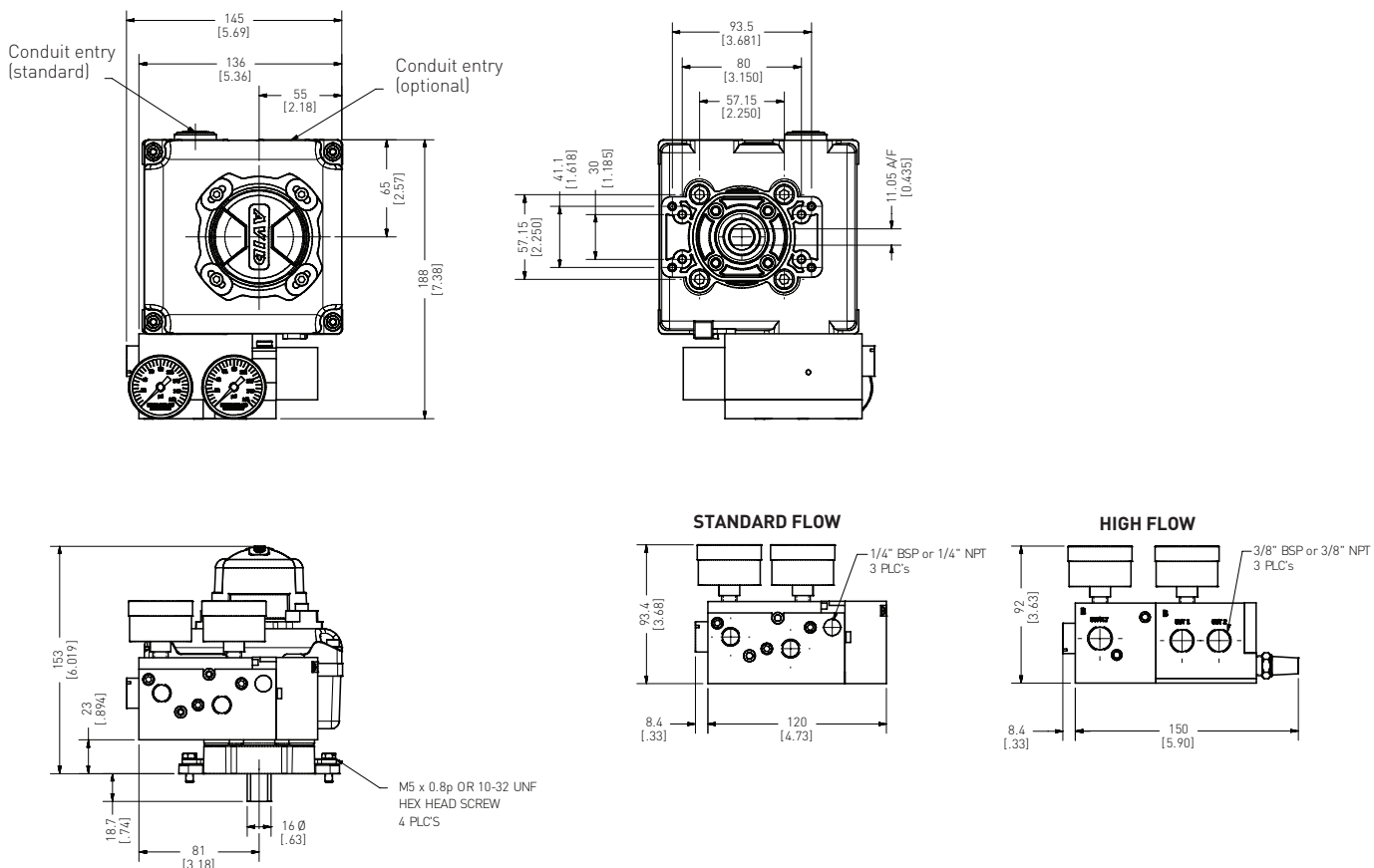
All models	Engineered resin
------------	------------------



AVID EAZICAL ELECTRO-PNEUMATIC POSITIONER

GENERAL PURPOSE

AVID EAZICAL ROTARY - DIMENSIONS



Dimensions in inches, metric dimension (mm) in parentheses

TECHNICAL SPECIFICATIONS

Input current	4-20 mA (analog)
Voltage drop	9 V
Supply air pressure	(low) 15 to 45 psi, (high) 40 to 120 psi
Resolution	0.5% of span
Linearity	±1% of span
Hysteresis	0.4% of span
Repeatability	0.4% of span
Thermal coefficient	[2%/100°C]
Output flow rates	(low) 8.0 scfm at 25 psi, (high) 16.2 scfm at 90 psi
Air consumption	(low) 0.03 scfm at 25 psi, (high) 0.08 scfm at 90 psi
Gain	Electronically adjustable
Air connection ports	1/4" NPT

Materials of construction

Housing	Engineered resin
Cover	Clear engineered resin
Manifold	Anodized aluminum
Conduit	Stainless 3/4" NPT
Shaft	Stainless steel
Hardware	Stainless steel

MICRO-SWITCH V3

SPDT (V3)		
A	V AC	V DC
15	125	
15	250	
6		24
0.50		125
0.25		250

AVID EAZICAL ELECTRO-PNEUMATIC POSITIONER

ORDERING INFORMATION

SELECTION GUIDE

Base Model

EZ AVID EaziCal Positioner

Application

- 0 Standard Flow
- C Re-Transmission
- H High Flow
- R High Flow and Re-Transmission

Conduit Entry

- 1 ½
- 2 M20
- 5 ¾
- A 2 x ½
- B 2 x M20 (if switches are fitted)

Number of Switches

- 0 No Switches Fitted
- 2 2 x Switches

Type of Switch (small selection shown)

- 00 No Switches Fitted
- 01 Mechanical SPDT
- 03 P&F NJ2-V3-N
- 07 P&F NBB3-V3-Z4
- 10 IFM IS5026
- 11 IFM IS5001

Terminal Strip

- 0 No Terminal Strip
- A 6 Point

Mounting

- D Direct Mount Metric Fixings
- I Direct Mount Imperial Fixings

Pneumatic Connections

- 0B BSP
- 0N NPT

Special Feature

- 00 Standard No Special feature

Certification

- 0 Non-hazardous
- F FM (Mechanical SPDT switch option)

Revision

- R* Internal Revision Number *

EZ - 0 2 0 0 0 0 D 0B - 00 - 0 R2 = Model Number **EZ-020000D0B-00-0R2**

NOTES

- Please contact your sales office for guidance on selecting the best possible combination for your control and monitoring requirements.

ООО “ЭВИ Инжиниринг”
 02093, г. Киев, ул. Бориспольская, 26з, оф. 111
 тел. (044) 36-18-450
 e-mail: info@ewi-engineering.com.ua
 Website: ewi-engineering.com.ua